

MUELLER® GAS

2" – 4"

H-10917

Slide Gate

Valves

⚠ WARNING:

1. Read and follow instructions carefully. Proper training and periodic review regarding the use of this equipment is essential to prevent possible serious injury and/or property damage.
2. Do not exceed the pressure ratings of any components or equipment. Exceeding the rated pressure may result in serious injury and/or property damage.
3. Safety goggles and other appropriate protective gear should be used. Failure to do so could result in serious injury.
4. Pressure test, check for and repair leaks in all fittings and components each time one is installed or any joint or connection is broken. Failure to find and repair a leak from any source in the fittings, by-pass lines or equipment could result in an explosion and subsequent serious injury and/or property damage.

Mueller Co.

Reliable Connections™

Customer Service Center

Decatur, Illinois

800.798.3131

www.muellergas.com

moreinfo@muellercompany.com

All warranties, expressed or implied, for Mueller Drilling Machines are rendered null and void if the machines are used with shell cutters or equipment manufactured by someone other than Mueller Co.

2"– 4" H-10917 Slide Gate Valves

Repair and Maintenance Instructions

GENERAL

Overview

Mueller Co. model H-10917 Slide Gate Valve is commonly used in many small diameter line stopping applications. The newest model incorporates many upgrades, providing ease of use and field maintenance.

Features

- High strength aluminum body reduces weight by up to 40% depending on size.
- Replaceable Steel threads provide easy field replacement if damaged.
- O-ring seals deliver leak-free operation and simple maintenance.
- Low Profile
- 275psig

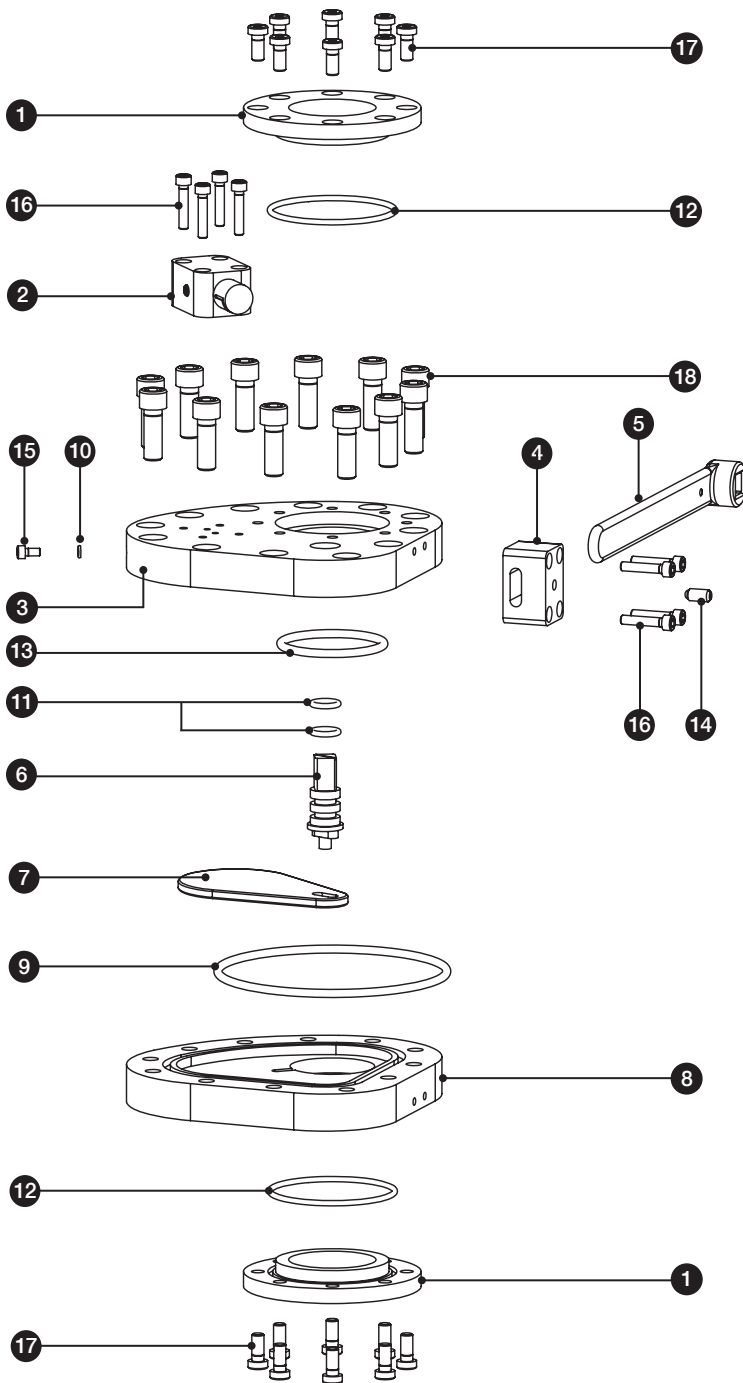
REPAIR INSTRUCTIONS

1. Disassemble the upper and lower adapters.
2. Remove screws and handle block.
3. Remove screws and separate the two valve bodies.
4. Separate gate and the operating square from the lower valve body.
5. Replace the O-rings on the adapters, on the valve bodies, and on the operating square.
6. Before assembling the new O-rings, carefully clean the area with Paint Thinner. Clean the new O-rings with a cloth wetted with alcohol. After the cleaning do not touch the O-rings with dirty hands to prevent contamination.
7. After assembling the O-rings, let the air exit by slightly pressing on the O-ring with a small blunt screwdriver.
8. Lubricate the gate sliding surface, the gate itself and the operating square with SKF LGMT 2 (or equivalent) grease.
9. Place the gate in its sliding seat onto the lower valve body matching the operating square with its corresponding seat.
10. Re-assemble the upper valve body and the lower and upper adapters.

Note: The main body O-ring should be pressed into position at (4) points then followed from point to point for final insertion. The O-ring should be inserted into the groove dry, then lubricant applied to the gate and/or top side of the O-ring.

2"– 4" H-10917 Slide Gate Valves

Parts



PARTS LIST

ID	DESCRIPTION	PART #
1	Lower & Upper Adapter	2" – 313089
		2½" – 313090
		3" – 313092
		4" – 313093
2	Equalization Valve	683020
3	Upper Valve Body (Non-Replaceable Part)	
4	Handle Block Kit*	360166
5	Replacement Handle	313102
6 & 7	Replacement Gate Operating Square Included with Gate	2" – 313107
		2½" – 313108
		3" – 313109
		4" – 313110
8	Lower Valve Body (Non-Replaceable Part)	
9 – 13	O-Ring Kit	2" – 313111
		2½" – 313112
		3" – 313113
		4" – 313114
14	Handle Retaining Screw	313131
15	Screw (Non-Replaceable Part)	
16	Screw	313117
17	Screw	313118
18	Screw	2" – 313119
		2½" – 313119
		3" – 313119
		4" – 313120

*Handle Block Kit includes parts 4, 14 and 16.

NOTES: O-ring Kits include all O-rings for main valve. Equalization Valves are sold complete. Individual parts of the Equalization Valves are not available for purchase.

For H-10917 Valves yellow in color (Pre-2015), please contact Customer Service for repair parts.



Reliable Connections[®]

Gas (North America)
1.800.798.3131
www.muellergas.com
moreinfo@muellercompany.com

International
1.423.490.9555
www.mueller-international.com
international@muellercompany.com

Copyright © 2016 Mueller Co., LLC. All Rights Reserved.

The trademarks, logos and service marks displayed in this document herein are the property of Mueller Co., LLC, its affiliates or other third parties. Products marked with a section symbol (§) are subject to patents or patent applications. For details, visit www.mwppat.com. These products are intended for use in potable water applications. Please contact your Mueller Sales or Customer Service Representative concerning any other application(s).

Form 13232 - 02/17