

SHUR STOP®

a MUELLER brand

MUELLER GAS PRODUCTS

SHUR STOP® PE LINE
STOPPING SYSTEM

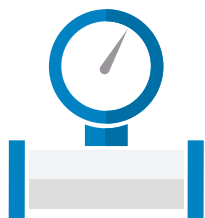


MUELLER

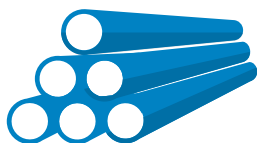
SHUR STOP FEATURES AND ADVANTAGES

The Mueller® Shur Stop® Polyethylene (PE) Line Stopping System is a revolutionary lightweight solution providing 100% leakfree performance.

Whatever your PE Stopping application, Mueller has the tools and parts to get the job done efficiently and safely.



125 PSI maximum working pressure to meet demands of modern PE systems



PE 100 electrofusion fittings work on MD and HD pipe. Also can be fused onto older generation PE pipe per company guidelines



Size of pipe, compatible with 4", 6", 8" and 12"



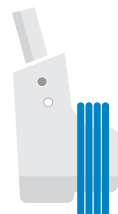
Sturdy, but lightweight design and construction



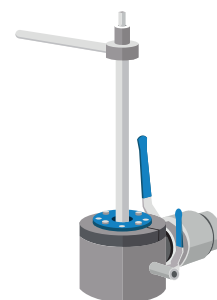
Reliable and easy to use; meets and exceeds ASTM requirements



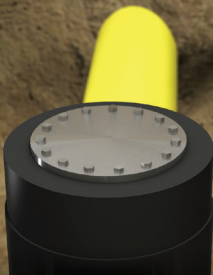
Electrofusion Fittings compatible with industry standard universal processors



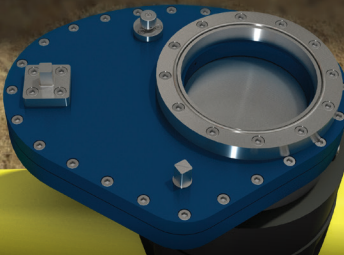
Unique mechanical stopper provides NO-BLO performance



Large machine-to-machine by-pass connections



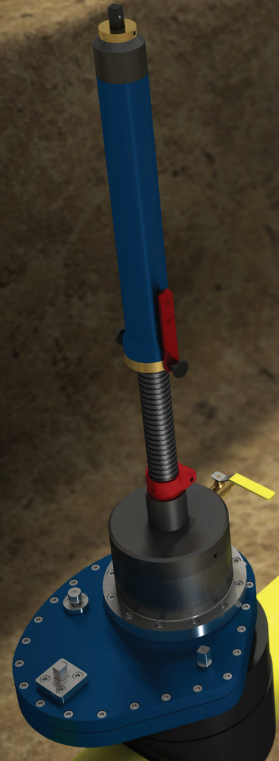
Fittings provide secure reliable electrofusion connection. Installed using proven industry standard processors and procedures.



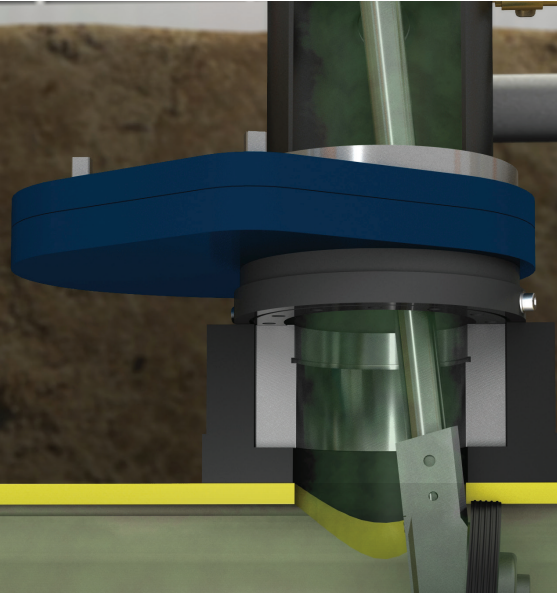
Lightweight aluminum alloy valve delivers strength and maneuverability in a low profile design.



Inspection and Cleaning Viewer allows operator to fully inspect the pipe after cutting operation.



Drilling Machine contains built-in travel indicator eliminating guesswork from the drilling procedure. Virtually all PE shavings are collected inside specially designed shell cutters.



Revolutionary stopper design is mechanically expanded into the pipe wall, ensuring a complete NO-BLO stop-off every time. One stopper diameter covers a wide range of SDR's, eliminating the need for multiple stopper rings.

UNIT 46 EQUIPMENT



The **SHUR STOP® UNIT 46 PE Line Stopping System** can be utilized to quickly and efficiently repair, replace or relocate PE pipelines. The equipment is capable of being used in a smaller excavation footprint without need for squeeze offs or double block or bleed processes.



Stop-off on older generation PE



Electrofusion fitting installation



ELECTROFUSION FITTING

- Electrofusion fittings are fully compatible with industry standard universal processors
- O-ring sealed steel completion plug
- Optional urethane protection cap

FITTING CENTERING CLAMP

- Used to properly position electrofusion fitting on pipe for fusion operation

SLIDE GATE VALVE

- 125 psi maximum working pressure at 100° F
- Quick 1/4 turn operation
- Equalization valve feature
- Replaceable thread rings
- O-ring seals

DRILLING & COMPLETION MACHINE

- 125 psi maximum working pressure at 100° F
- Used in conjunction with Shur Stop® PE 4" and 6" electrofusion fittings
- Lightweight (18 lbs.) multi multi-functional machine
- Built-in drilling indicator
- Can also be utilized as a completion machine

INSPECTION & CLEANING VIEWER

- Used to inspect pipe for debris or shavings before stopping and as a sweeper to remove debris from stopping area
- Large viewing area

STOPPING MACHINE

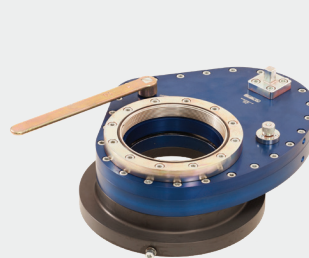
- 125 psi maximum working pressure at 100°F
- Stop-off 4" and 6" Shur Stop® electrofusion fittings
- Body has integral 2" F.I.P. thread thread bypass connection
- Used in conjunction with control valve



ELECTROFUSION FITTING



FITTING CENTERING CLAMP



SLIDE GATE VALVE



DRILLING & COMPLETION MACHINE



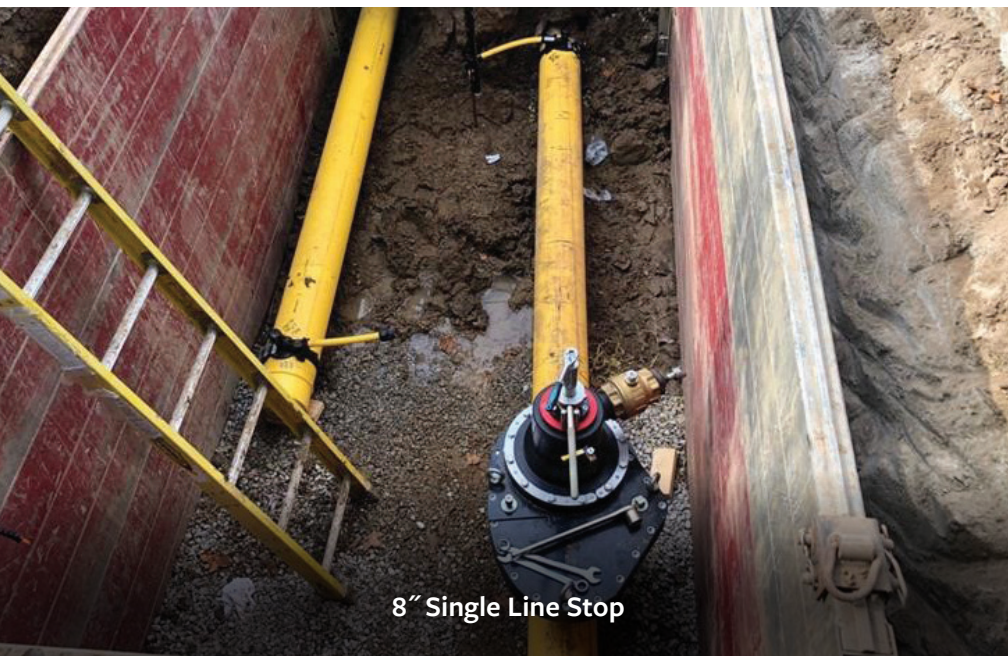
INSPECTION & CLEANING VIEWER



STOPPING MACHINE

UNIT 68 EQUIPMENT

The **SHUR STOP® UNIT 68 and 812 PE Line Stopping Systems** are lightweight, easy to use stopping systems designed to perform a broad range of pipeline isolation applications on larger diameter PE systems. With similar operation procedures to Unit 46 equipment, operators can be trained on the entire Shur Stop system of sizes quickly and efficiently.



8" Single Line Stop



8" Drilling Operation



8" Line Stop with Bypass

UNIT 812 EQUIPMENT

FITTING CENTERING CLAMP

- Used to properly position electrofusion fitting on pipe for fusion operation

SLIDE GATE VALVE

- 125 psi maximum working pressure at 100° F
- Quick 1/4 turn operation
- By-pass valve for easy gate operation
- Low profile design

DRILLING & COMPLETION MACHINE

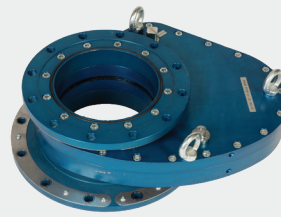
- 125 psi maximum working pressure at 100° F
- Drilling machine with integrated hydraulic operator
- Built-in drilling indicator
- Can also be utilized as a completion machine

INSPECTION & CLEANING VIEWER

- Large viewing area allows for viewing of cut and interior pipe conditions

STOPPING MACHINE

- 125 psi maximum working pressure at 100° F
- Large integral machine-to-machine bypass outlet
- 100 Percent NO-BLO stop off performance



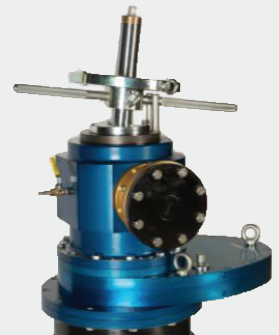
SLIDE GATE VALVE



DRILLING & COMPLETION MACHINE



INSPECTION & CLEANING VIEWER



STOPPING MACHINE



12" Single Line Stop

Delivery and Service

The capacity to deliver the widest array of products and stand behind those products to ensure your satisfaction is our strength. The success of Mueller is dependent upon the success of those who are involved, both inside and outside our company. Therefore, we feel our future is wholly-dependent on the long-term relationship with our employees, customers and suppliers. This is why we strive to be proactive and responsive to your needs, always looking for a “better way.” It’s an approach that has set us apart since 1857 and will assure our mutual achievement and prosperity in the future.

Mueller sales representatives, strategically located around the world, are always ready to provide application and installation assistance and help with any special requirements.

For more information about us, or to view our full line of products, please visit www.muellergas.com or call: 1.800.798.3131

Mueller refers to one or more of Mueller Water Products, Inc., a Delaware corporation (“MWP”), and its subsidiaries. MWP and each of its subsidiaries are legally separate and independent entities when providing products and services. MWP does not provide products or services to third parties. MWP and each of its subsidiaries are liable only for their own acts and omissions and not those of each other. MWP brands include Mueller®, Echologics®, Hydro Gate®, Hydro-Guard®, HYMAX®, Jones®, Krausz®, Mi.Net®, Milliken®, Pratt®, Pratt Industrial®, Singer®, and U.S. Pipe Valve & Hydrant. Please see muellerwp.com/brands to learn more.

©2020 Mueller Co., LLC. All Rights Reserved. The trademarks, logos and service marks displayed in this document are the property of Mueller Co., LLC., its affiliates or other third parties. Products above marked with a section symbol (§) are subject to patents or patent applications. For details visit www.mwppat.com.