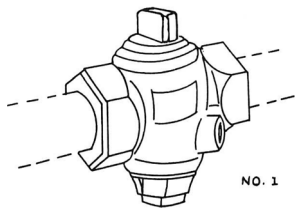
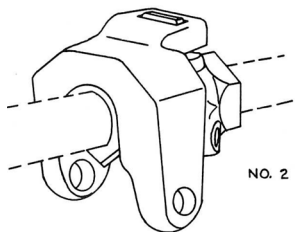


Installation Instructions

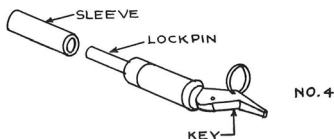
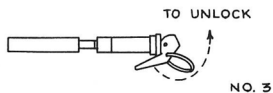
1. Turn Meter Stop to closed position. (Sketch #1)



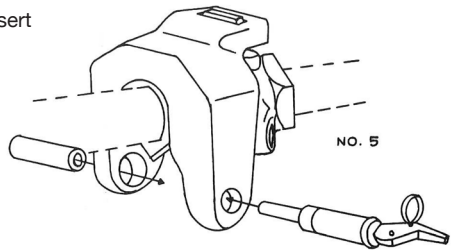
2. Place the iron yoke over the meter stop so that the legs straddle the inlet hex and the slot in the yoke fits over the head of the key. (Sketch #2)



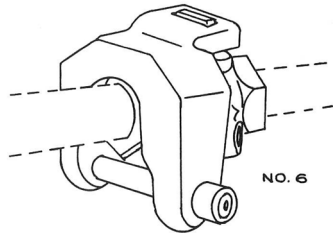
3. Insert the special key into the end of the Brooks Barrel Lock and pull back and up on the key handle while holding in on the key. (Sketch #3)
This separates the Barrel Lock into two parts – sleeve and lock pin. (Sketch #4) The lock pin will be held by the key. Do not remove it from the key.
* Registered trademark of E.J. Brooks Co.



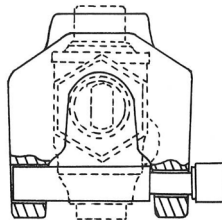
4. Select yoke leg having the larger hole and insert the sleeve part of the Barrel Lock through the hole. (Sketch #5)



5. With the key still in the lock pin, insert the lock pin through the smaller opening in the other leg of the iron yoke and into the sleeve part of the Barrel Lock joining the two parts together. (Sketch #5)



6. Push down on the key handle to lock the sleeve and lock pin together (Sketch #3). Remove the key from the Barrel Lock.
7. Locking Device is now securely locked to the Meter Stop. (Sketch #6)



**End view of H-11093 with
Barrel Lock in place.**

Phone: (800) 798-3131

By deviating from the above listed instructions, you will void any product warranty and release Mueller Co. and its affiliated entities from any and all liability associated with the installation or use of this product. For details on the product's warranty, terms, and conditions, please visit www.muellergas.com.

© 2018 Mueller Co., LLC. All rights reserved.

Form 9899 01/18